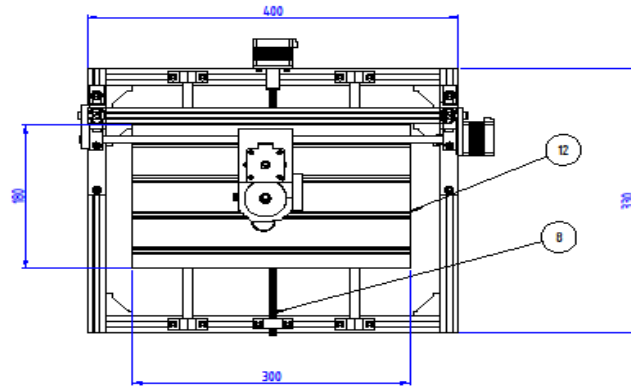


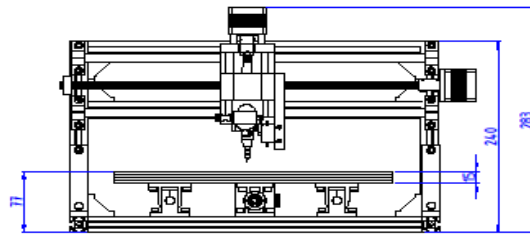
Lampiran

REVISION HISTORY

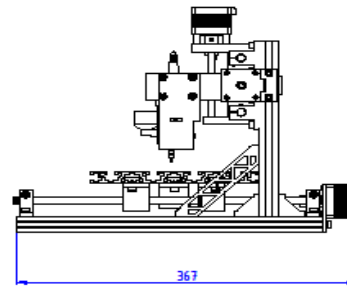
REV	BY.	DATE	DESCRIPTION
0	mufarji	11-Oct-18	DIKELUARKAN PERTAMA KALI UNTUK MANUFAKTUR



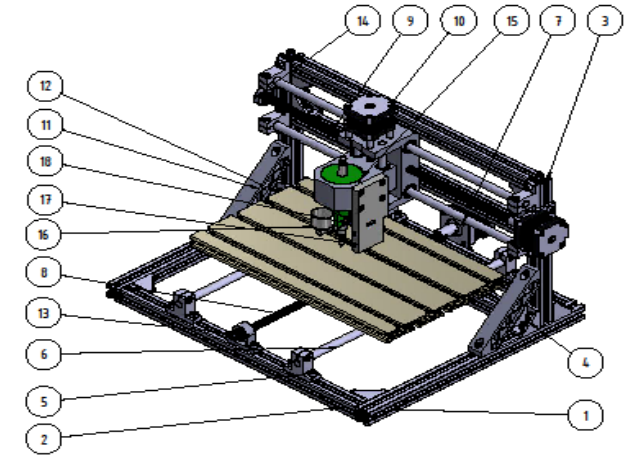
TAMPAK ATAS



TAMPAK DEPAN



TAMPAK SAMPING



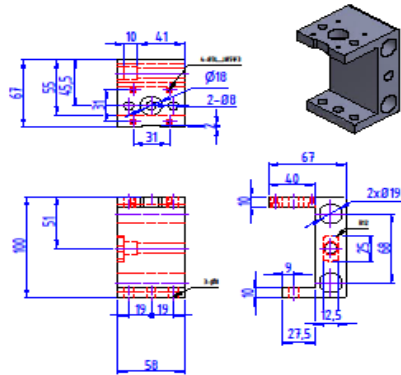
TAMPAK ISOMETRIK

18	1	PC/ABS Plastic	MOTOR SERVO			
17	1	PVC	RUMAH SERVO			
16	1	AL	PEN BRUSH			
15	1	AL	SPINDLE			
14	1	pps plastic	MOUNT LEAD SCREW X			
13	1	pps plastic	MOUNT LEAD SCREW Y			
12	1	AL	TABLE			
11	2	pps plastic	SIKU PENYANGGA			
10	3		MOTOR STEPPER			
9	1	SS	LEAD SCREW X			
8	1	SS	LEAD SCREW Y			
7	2	SS 305	LINER SHAFT X			
6	2	SS 305	LINER SHAFT Y			
5	8	AL	SHAFT BLOK			
4	16	AL	CLAMP SIKU			
3	2	AL 6360	KERANGKA SAMPING ATAS			
2	5	AL 6360	KERANGKA TENGAH			
1	2	AL 6360	KERANGKA SAMPING			
ITEM	QTY	MATERIAL	DESCRIPTION	DIMENSION		DWG NUMBER
KEKASARAN DALAM μm		TOLERANSI ISO		3018 CNC Assembly (1/dwg)		REVISI:
	SKALA	15	DIGAMBAR	mufarji		PELANGGAN : TEKNIK MESIN
	UKURAN	dalam mm	DIPERIKSA	EDH		
	TANGGAL	28/08/2021	DISETUJUI	AA 28/08/2021		
UNIVERSITAS DARMA PERSADA			ASSEMBLY CNC CNC 3018 AIR BRUSH			1 A3

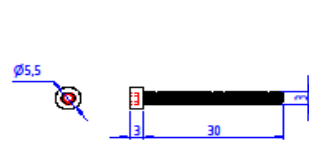
REVISION HISTORY

REV	BY	DATE	DESCRIPTION
0	MUFARUJI	09-sept-21	DIKELUARKAN PERTAMA KALI UNTUK MANUFAKTUR

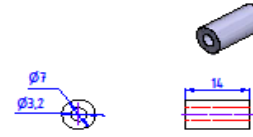
1 Z Axis Head
SCALE 1:4



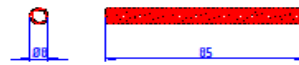
2 M3x12 Socket Head Cap Screw
SCALE 1:3



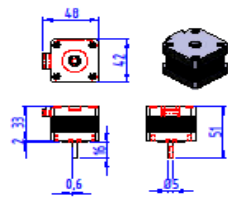
3 14mm stepper standoff
SCALE 1:3



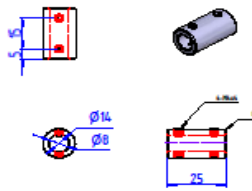
5 Lead Screw t8
SCALE 1:4



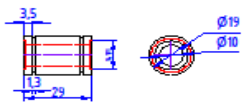
4 Motor Stepper
SCALE 1:3



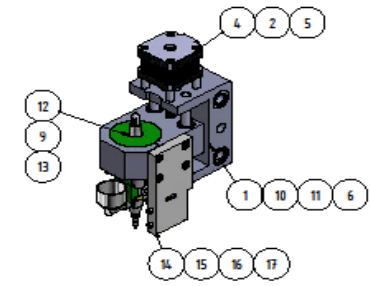
7 Coupling
SCALE 1:3



6 Linier Bushing
SCALE 1:3



8 Poros Shaft
SCALE 1:3



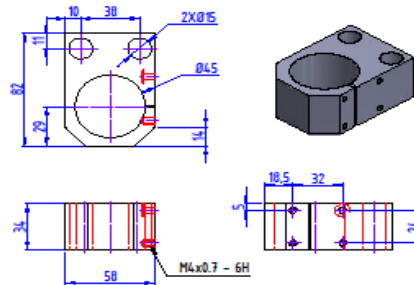
ITEM	QTY	MATERIAL	DESCRIPTION	DIMENSION	DWG NUMBER
17	3	Steel	M3x12 Socket Head Cap Screw	M3x12	
16	4	Steel	M4x14	M4x14	
15	1	PC/ABS Plastic	Servo		
14	1	PPS Plastic	rumah servo		
13	1	Aluminium	pen brush		
12	1	Aluminium 6061	Spindle		
11	1	Bronze, Soft Tin	Leadscrew Nut Milled	T8	
10	1	Stainless Steel	Leadscrew Nut Spring Compressed	T8	
9	1	PPS Plastic	Mounth spindle		
8	2	Stainless Steel	Poros shaft		
7	1	Aluminium 6061	coupling		
6	4	Steel	Linier Bushing LM10UU	LM10UU	
5	1	Stainless Steel	Leadscrew T8		
4	1	Generic	Motor Stepper		
3	4	Generic	14mm stepper standoff	Ø14X14MM	
2	4	Steel	M3 Socket Head Cap Screw	M3x30	
1	1	PPS Plastic	Z axis head		

KEKASARAN DALAM µm	TOLERANSI ISO	Z Axis Assy penganbangan 1114wg			REVISI : 0
	SKALA	1/2/14	DIGAMBAR	MUFARUJI	PELANGGAN : TEKNIK MESIN
	UKURAN	dalam mm	DIPERIKSA	EDH	
	TANGGAL	16/09/2021	DISETUJUI	AA	
UNIVERSITAS DARMA PERSADA		Spindle DETAIL DARWING			MAJ-21-CNCAB-1 A3

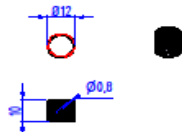
REVISION HISTORY

REV	BY.	DATE	DESCRIPTION
0	FARCOM	11-Oct-18	DIKELUARKAN PERTAMA KALI UNTUK MANUFAKTUR

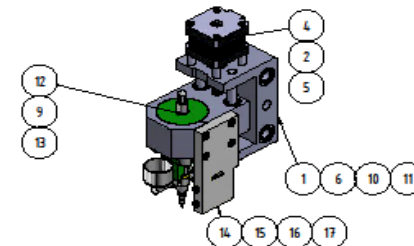
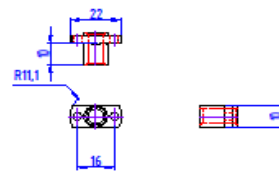
9 MOUNT SPINDLE
SCALE 1:3



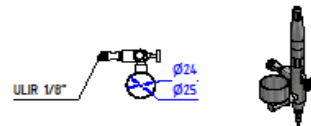
10 NUT SPRINGS
SCALE 1:2



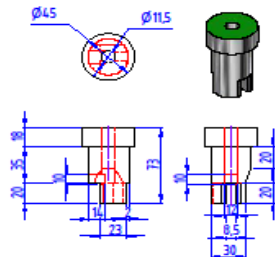
11 LEAD SCREW NUT
SCALE 1:2



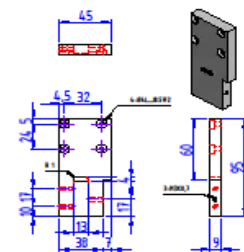
14 PEN BRUSH
SCALE 1:4



12 SPINDLE
SCALE 1:4



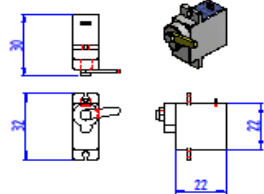
13 RUMAH SERVO
SCALE 1:4



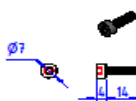
17 M3x12 Socked Head Cap Screw
SCALE 1:2



15 SERVO
SCALE 1:2



16 M4x14
SCALE 1:2



17	3	Steel	M3x12 Socket Head Cap Screw	M3x12	
16	4	Steel	M4x14	M4x14	
15	1	PC/ABS Plastic	Servo		
14	1	PPS Plastic	rumah servo		
13	1	Aluminium	pen brush		
12	1	Aluminum 6061	Spindle		
11	1	Bronze, Soft Tin	Leadscrew Nut Milled	T8	
10	1	Stainless Steel	Leadscrew Nut Spring Compressed	T8	
9	1	PPS Plastic	Month spindle		
8	2	Stainless Steel	Poros shaft		
7	1	Aluminum 6061	coupling		
6	4	Steel	Linier Bushing LM10UU	LM10UU	
5	1	Stainless Steel	Leadscrew T8		
4	1	Generic	Motor Shepper		
3	4	Generic	14mm stepper standoff	Ø14X14MM	
2	4	Steel	M3 Socket Head Cap Screw	M3x30	
1	1	PPS Plastic	Z axis head		

ITEM	QTY	MATERIAL	DESCRIPTION	DIMENSION	DWG NUMBER
KEKASARAN DALAM µm		TOLERANSI ISO		2 Axis Assy PENGEMBANGAN 222.dwg	
REVISI : 0		SKALA		DIGAMBAR	
PELANGGAN :		12/14		FARCOM	
TEKNIK MESIN		dalam mm		DIPERIKSA	
		TANGGAL		EDH	
		04/09/2021		AA	
				11/10/2018	
UNIVERSITAS DARMA PERSADA		Spindle DETAIL DRAWING		MAJ-21-CNCAB-2	
				A3	