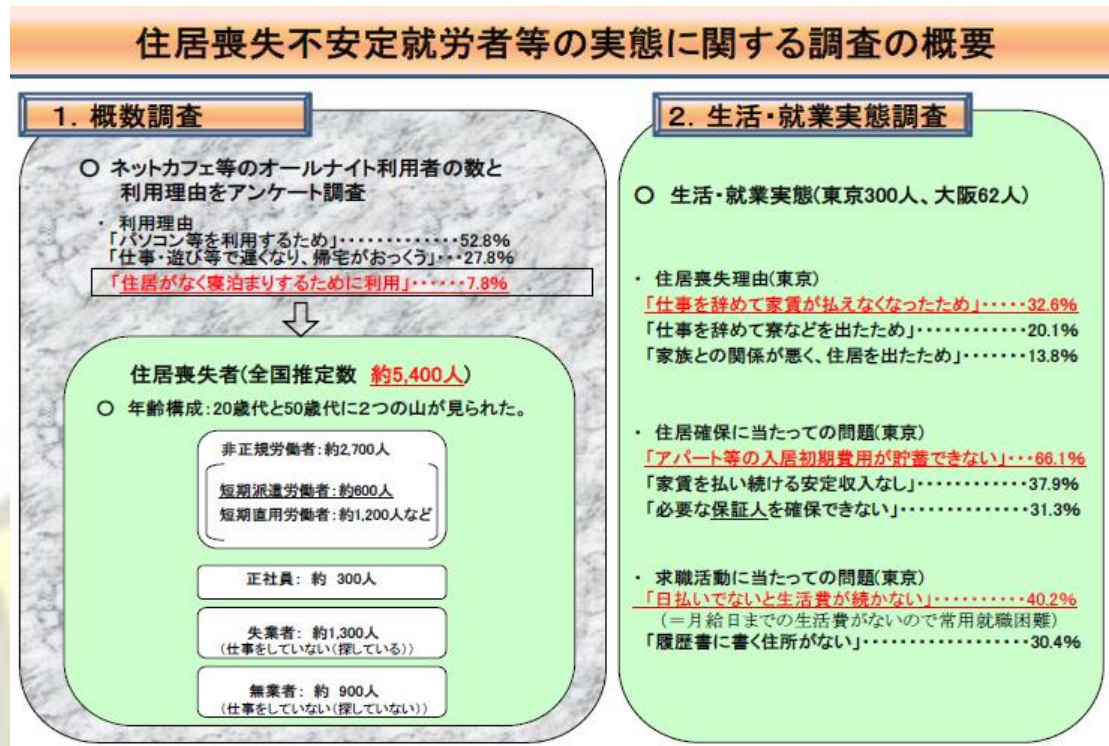


LAMPIRAN 1

Survey yang dilakukan Kementerian Kesehatan, Tenaga kerja dan Kesejahteraan pada tahun 2007



Sumber : <http://www.mhlw.go.jp/stf/houdou/2r98520000004c72-att/2r98520000004ca0.pdf>

*Penjelasan untuk survey tersebut dapat dilihat pada bab. 2

LAMPIRAN 2

Salah satu program pemerintah untuk mengatasi Net Café Refugees

Support for non-regular employees to get regular employment

- For casual employees, etc., regular employment support by providing vocational training, various seminars, and use of the Trial Employment System, in addition to careful career counseling and job placement, have been implemented.
- Since FY2012, employment support hubs, such as "Hello Work for Young People", etc. that are specialized in casual employees, have been improved.

[Hello Work support to casual employees for their regular employment]

Individual support that provides face-to-face assistance for casual employees at Hello Work nationwide has been implemented. Since 2012, "Hello Work for Young People" (3 offices as of April 1, 2013) and "Young People Support Corner" have been established (211 offices nationwide as of April 1, 2013) as support hub offices for the regions where there are especially more casual employees. Pre-consultation at the first visit, creating a job plan for regular employment, employment counseling and referral, and employment assistance seminars for casual employees are provided.

[Support by Job Cafés]

Aptitude tests, counseling, seminars, job placement, etc. are provided at the centers (Commonly called Job Cafés) that provide one-stop employment services for young people in response to local circumstances, mainly run by prefectural governments.

[108 centers in 46 prefectures as of April 1, 2013] (40 prefectures have Hello Work side by side)

Hello Work counter specialized in casual employees



[Employment promotion by financial incentive systems such as the Trial Employment System, etc.]

Regular employment is encouraged by utilizing the "Trial Employment System" (40,000 yen per person, up to 3 months), that gives companies opportunities to test their new employees, who are introduced by Hello Work, for three months.

Sumber : http://www.mhlw.go.jp/english/dl/employment_eng.pdf

*Penjelasan untuk data di atas dapat dilihat dalam bab. 3

Salah satu Net Café Refugees (TADASHI SAKAI)



Penghuni Internet Café yang lain (FUMIYA)



Sumber : [Http://www.disposableworkers.com](http://www.disposableworkers.com).

Harga menginap di salah satu Internet Cafe

INTERNET CAFE			
ネット カフェ	ALL TIME 30分	ALL TIME 「3時間パック」	MID NIGHT TIME (21:00~5:00) 「7時間パック」
every day (毎日)	150 yen	800 yen	1000 yen
ソフトドリンク飲み放題			
			

Sumber : <http://japanesemusicid.com/wp-content/uploads/2015/07/Internet-Cafe-600x450.jpg>

Salah satu Internet Café terkenal (Manboo Café)

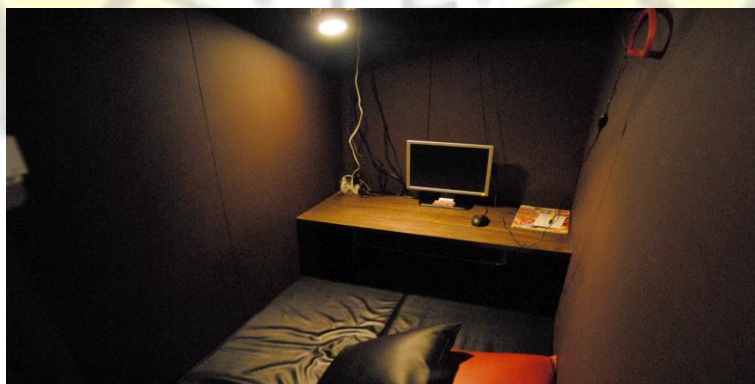


Sumber : <http://weekendglory.net/cara-dapetin-penginapan-murah-di-jepang/>

Fasilitas yang ada di Internet Cafe



Sumber : <http://www.zetizen.com>



Sumber : <http://thedailyjapan.com/panduan-menginap-di-warnet-jepang/>



Sumber : <https://i1.wp.com/japanesian.id/wp-content/uploads/2017/01/Fasilitas-Warnet-di-Jepang.jpg?resize=636%2C318>

