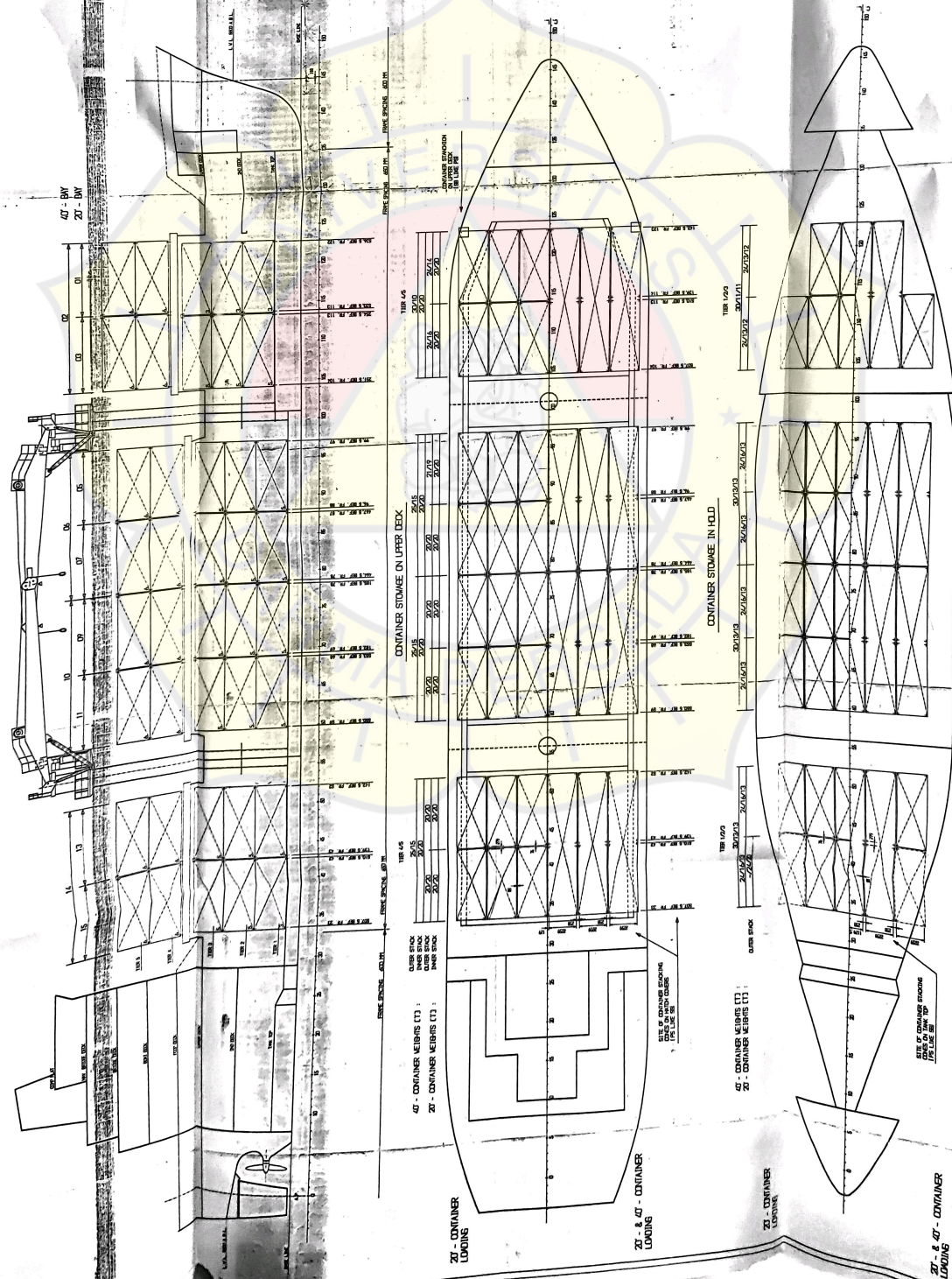
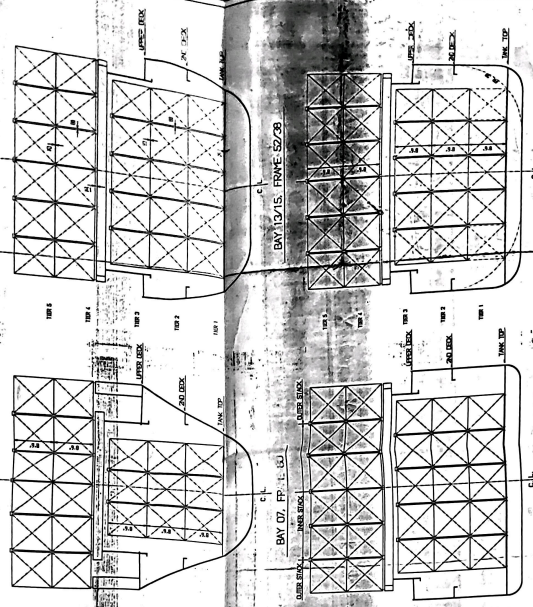


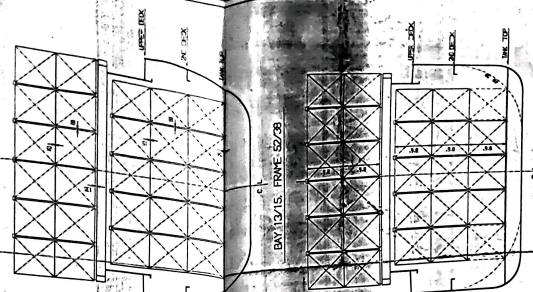
LONGITUDINAL SECTION AT C.L.



BAY 01, FRAME 123



BAY 03, FRAME 109



Centre of Gravity of Containers Loaded

TIER	NO. OF CONTAINERS	HEIGHT	TOTAL WEIGHT	Centre of Gravity (CG)	
				X (m)	Y (m)
TIER 5	13	13.888	13.888	13.888	14.909
TIER 4	11	11.222	11.222	11.222	12.991
TIER 3	13	7.822	7.822	7.822	8.843
TIER 2	13	4.974	4.974	4.974	5.028
TIER 1	13	2.300	2.300	2.300	3.401
TOTAL	63		63.000	11.222	11.408

CONTAINER CAPACITY

BAY	TIER	NO. OF CONTAINERS	HEIGHT	Capacity	
				47'	20'
BAY 01	TIER 1	13	2.300	13	13
BAY 01	TIER 2	13	4.974	13	13
BAY 01	TIER 3	13	7.822	13	13
BAY 01	TIER 4	11	11.222	11	11
BAY 01	TIER 5	13	13.888	13	13
BAY 03	TIER 1	13	2.300	13	13
BAY 03	TIER 2	13	4.974	13	13
BAY 03	TIER 3	13	7.822	13	13
BAY 03	TIER 4	11	11.222	11	11
BAY 03	TIER 5	13	13.888	13	13
TOTAL		63		63	63

REMARKS

ALL WORKS FITTINGS TO BE APPROVED BY THE SUPERVISOR.
 THE LADING EQUIPMENT IS TO BE APPROVED BY THE SUPERVISOR.
 CONTAINER STOWAGE TO BE APPROVED BY THE SUPERVISOR.
 P.T.M. DRIVING CONTAINER FITTING ARE TO BE APPROVED BY THE SUPERVISOR.

MAIN DIMENSIONS

LENGTH OVER ALL 97.000 M
 BEAM OVER ALL 14.000 M
 DRAUGHT 5.000 M

FINA 1

DATE: 11-14-2015
 DRAWING NO: 11-14-2015



DATE: 11-14-2015
 DRAWING NO: 11-14-2015