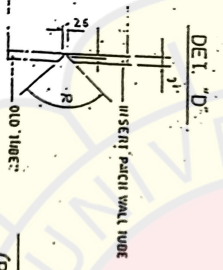
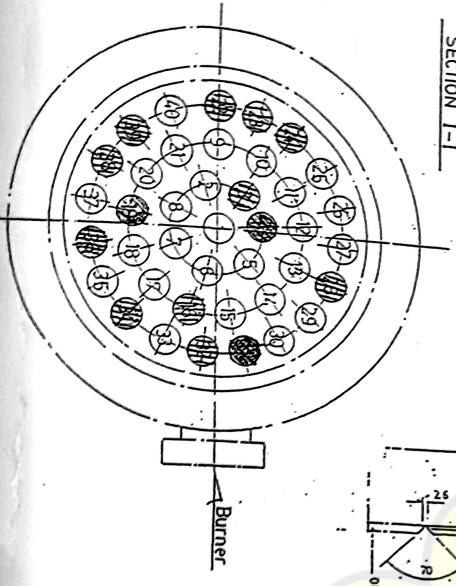
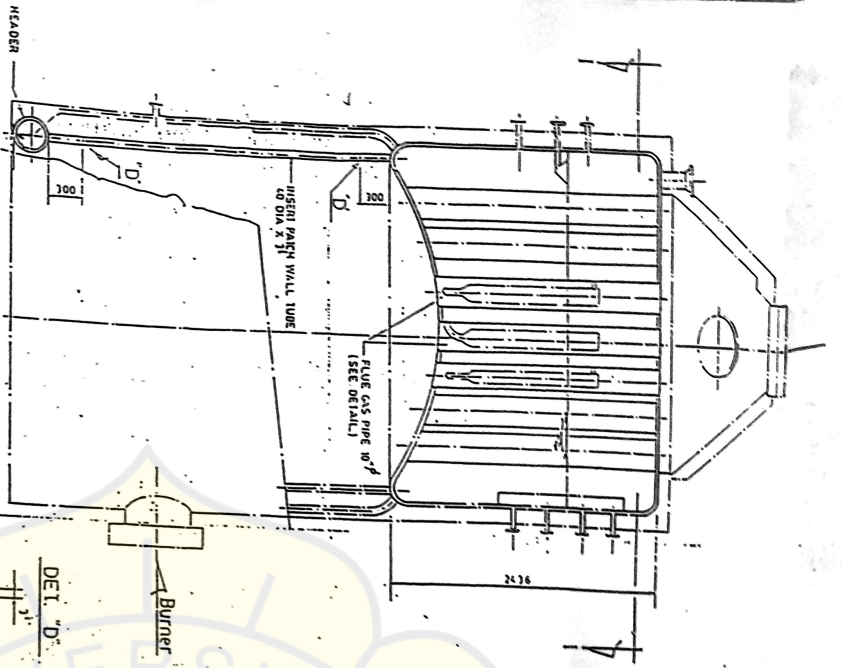
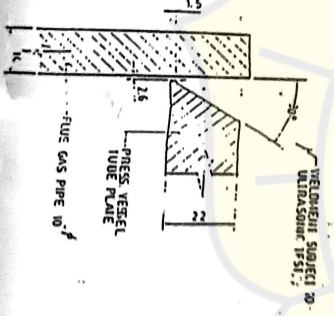


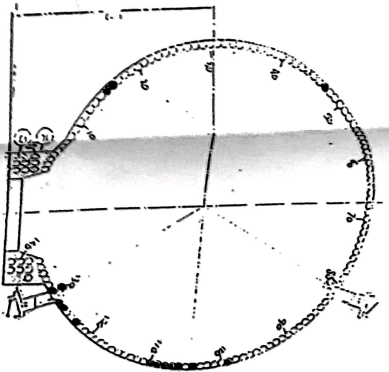
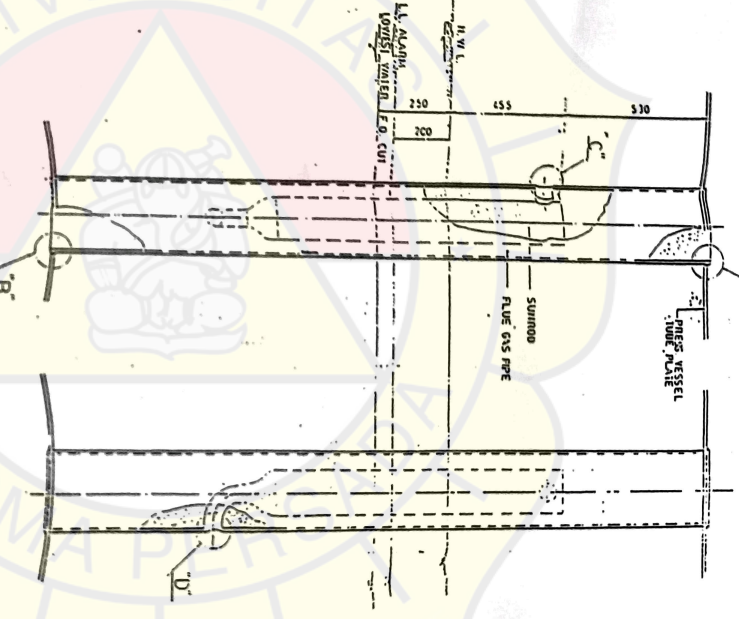
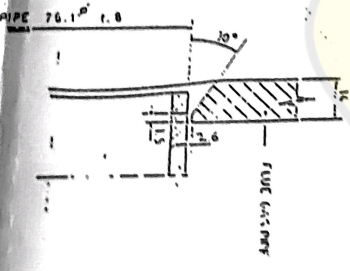
DETAIL SHROVE TUBE



DETAIL A (B similar)



DETAIL C (D similar)



- REMARKS
1. WELDING PROCEDURE:
 - WELDING PROCEDURE: SHROVE METAL AIR WELDING (MANUAL)
 - PREHEAT Temp: 400°C (750°F)
 - PREHEAT Temp: 500°C (900°F)
 - ELECT. WELDING: SAW
 - WELDING POSITION: ALL POSITIONS
 - WELDING PROCEDURE: BACK STEP TECHNIQUE
 2. HOE BY MEANS OF REVERSE POLARITY
 3. WELDING BY MEANS OF REVERSE POLARITY
 4. WELDING BY MEANS OF REVERSE POLARITY
 5. WELDING BY MEANS OF REVERSE POLARITY
 6. WELDING BY MEANS OF REVERSE POLARITY
 7. WELDING BY MEANS OF REVERSE POLARITY
 8. WELDING BY MEANS OF REVERSE POLARITY
 9. WELDING BY MEANS OF REVERSE POLARITY
 10. WELDING BY MEANS OF REVERSE POLARITY
 11. WELDING BY MEANS OF REVERSE POLARITY
 12. WELDING BY MEANS OF REVERSE POLARITY
 13. WELDING BY MEANS OF REVERSE POLARITY
 14. WELDING BY MEANS OF REVERSE POLARITY
 15. WELDING BY MEANS OF REVERSE POLARITY
 16. WELDING BY MEANS OF REVERSE POLARITY
 17. WELDING BY MEANS OF REVERSE POLARITY
 18. WELDING BY MEANS OF REVERSE POLARITY
 19. WELDING BY MEANS OF REVERSE POLARITY
 20. WELDING BY MEANS OF REVERSE POLARITY
 21. WELDING BY MEANS OF REVERSE POLARITY
 22. WELDING BY MEANS OF REVERSE POLARITY
 23. WELDING BY MEANS OF REVERSE POLARITY
 24. WELDING BY MEANS OF REVERSE POLARITY
 25. WELDING BY MEANS OF REVERSE POLARITY
 26. WELDING BY MEANS OF REVERSE POLARITY
 27. WELDING BY MEANS OF REVERSE POLARITY
 28. WELDING BY MEANS OF REVERSE POLARITY
 29. WELDING BY MEANS OF REVERSE POLARITY
 30. WELDING BY MEANS OF REVERSE POLARITY
 31. WELDING BY MEANS OF REVERSE POLARITY
 32. WELDING BY MEANS OF REVERSE POLARITY
 33. WELDING BY MEANS OF REVERSE POLARITY
 34. WELDING BY MEANS OF REVERSE POLARITY
 35. WELDING BY MEANS OF REVERSE POLARITY
 36. WELDING BY MEANS OF REVERSE POLARITY
 37. WELDING BY MEANS OF REVERSE POLARITY
 38. WELDING BY MEANS OF REVERSE POLARITY
 39. WELDING BY MEANS OF REVERSE POLARITY
 40. WELDING BY MEANS OF REVERSE POLARITY

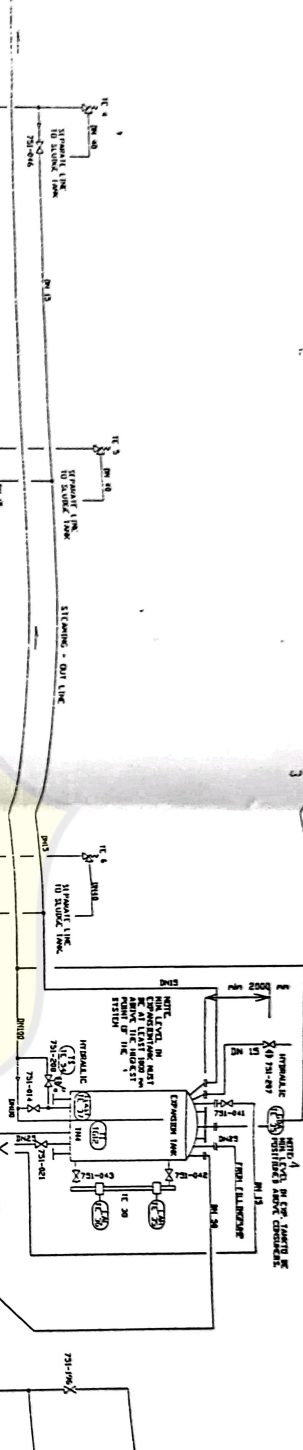
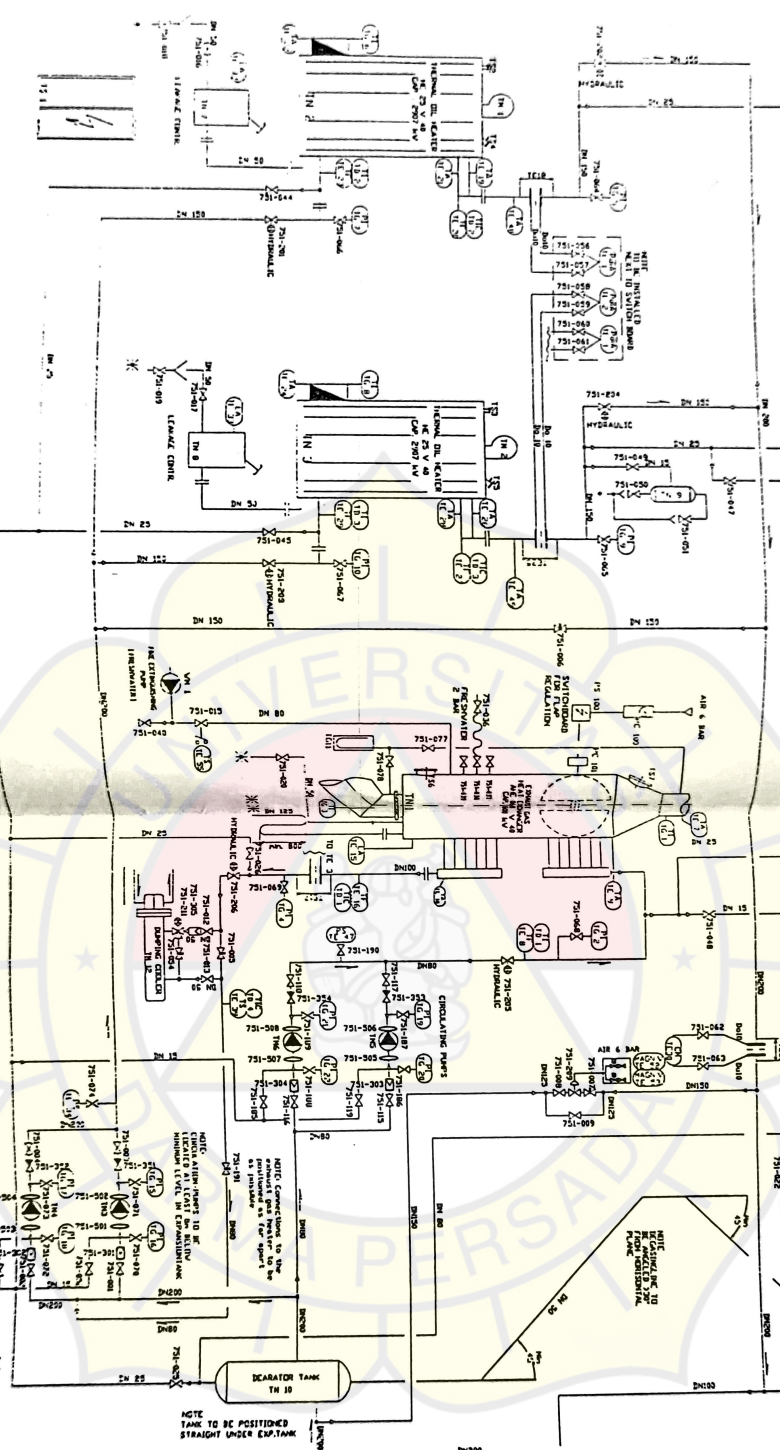
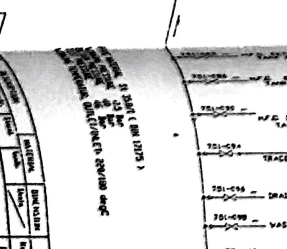
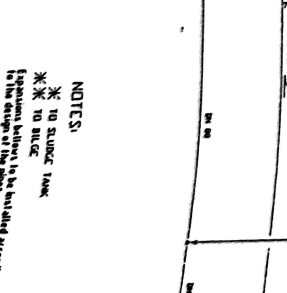
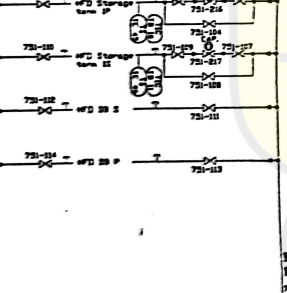
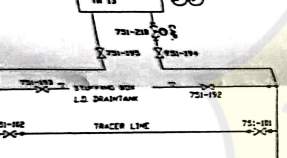
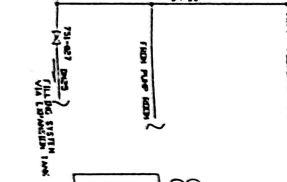
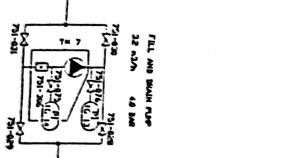
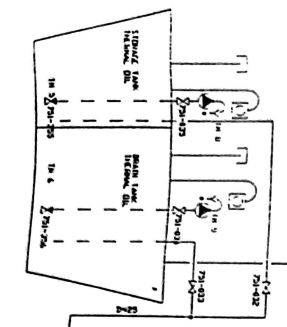
Will take to be revised:
 1516467 09 104 106 107 108,
 109 110 121 122 127 130 131
 Down corner pipe to be revised:
 2345612

Send to be revised (ship space)
 (N) 1
 Will take to be reworking off
 101 102 124 125 14
 Open corner to be reworking off
 10 11

Send to be reworking repair
 142223 242325 26 28 29

SMBOD CPH 160 Type II
 REPAIRING OF FLUE GAS PIPE

51.014 1.13.01 5.1
 944
 MT. PUNQUT / P.1022
 PT SARI MANDA



NOTES:
 * TO STAINK TANK
 * TO BLEED
 * TO BE POSITIONED STRAIGHT UNDER EXP. TANK
 * TO BE POSITIONED STRAIGHT UNDER EXP. TANK
 * TO BE POSITIONED STRAIGHT UNDER EXP. TANK

ITEM	DESCRIPTION	QUANTITY	REMARKS
1	HYDRAULIC OIL	1000	
2	HYDRAULIC OIL	1000	
3	HYDRAULIC OIL	1000	
4	HYDRAULIC OIL	1000	
5	HYDRAULIC OIL	1000	
6	HYDRAULIC OIL	1000	
7	HYDRAULIC OIL	1000	
8	HYDRAULIC OIL	1000	
9	HYDRAULIC OIL	1000	
10	HYDRAULIC OIL	1000	

PUMP ROOM

HYDRAULIC OIL
 PUMP ROOM

HYDRAULIC OIL
 PUMP ROOM

