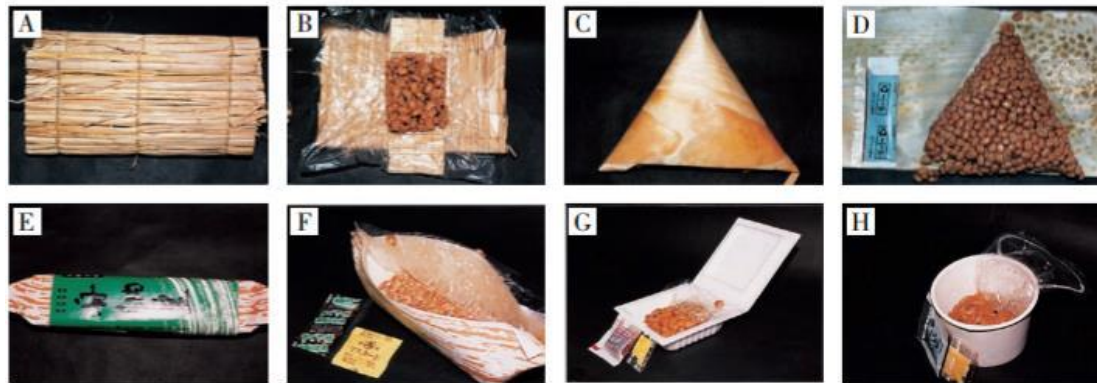


## LAMPIRAN

Gambar 2.3: Berbagai macam bentuk pengemasan *natto*



Sumber: Kiuchi Kan, 2001: 10

a). pembungkus jerami, b). *inside wrap*, c). *kyogi* (serutan kayu tipis), d). *inside wrap*, e). wadah berbentuk perahu, f). *inside boat*, g). wadah PSP, h). cangkir kertas.

Gambar 3.4: *Natto* di Atas Nasi



Sumber: [www.nelsonfarmersmarket.org](http://www.nelsonfarmersmarket.org)

Gambar 2.1: *Soboro Natto*



Sumber: [www.agefotostock.com](http://www.agefotostock.com)

Gambar 2.4: *Kuromame Natto*



Sumber: [michinoku-f.net](http://michinoku-f.net)

Gambar 2.5: Hama Natto



Sumber: [www.jalan.net/news](http://www.jalan.net/news)

Gambar 2.7: Yukiwari Natto



Sumber: <https://magomagom.exblog.jp/11382042/>

Gambar 2.8: Amanatto



Sumber: [www.kingstone.com.tw](http://www.kingstone.com.tw)

