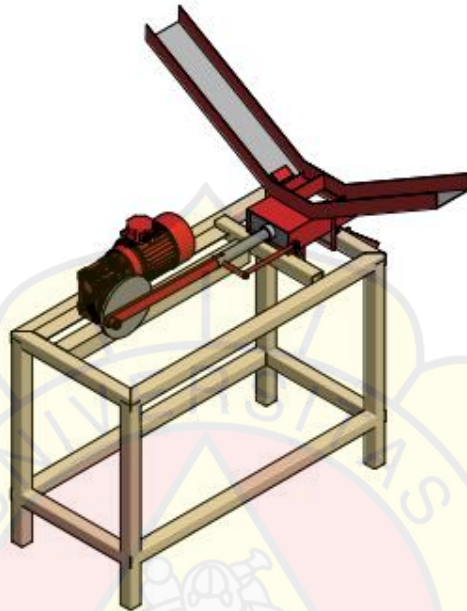


LAMPIRAN

1. Gambar 3D Desain Mesin Press 2 Inlet

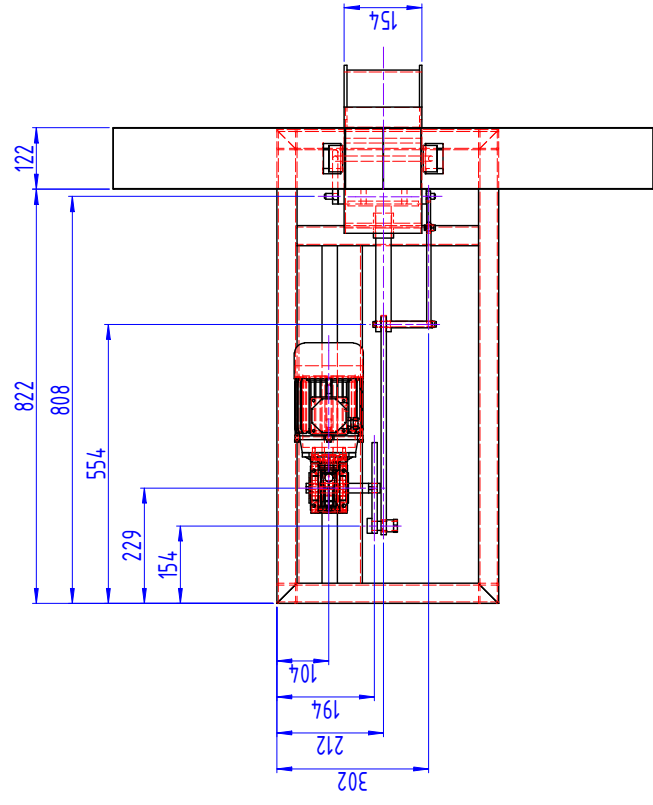


2. Mesin Press 2 Inlet

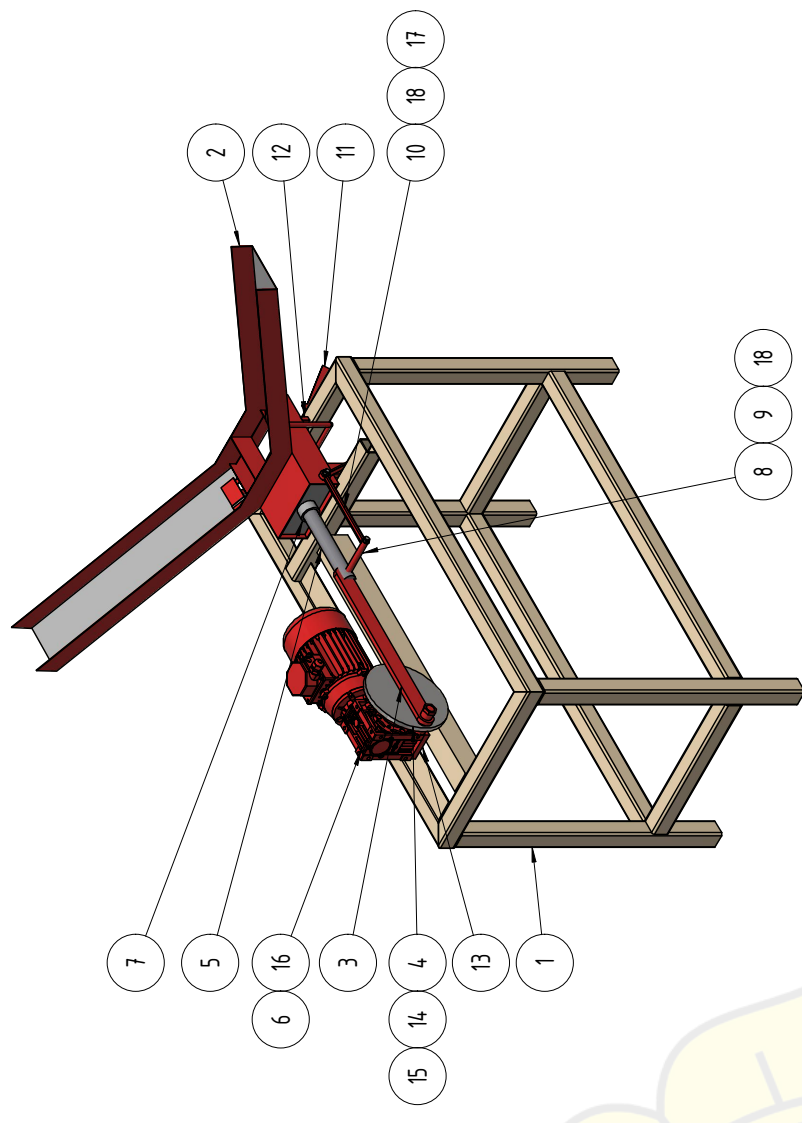


REVISION HISTORY

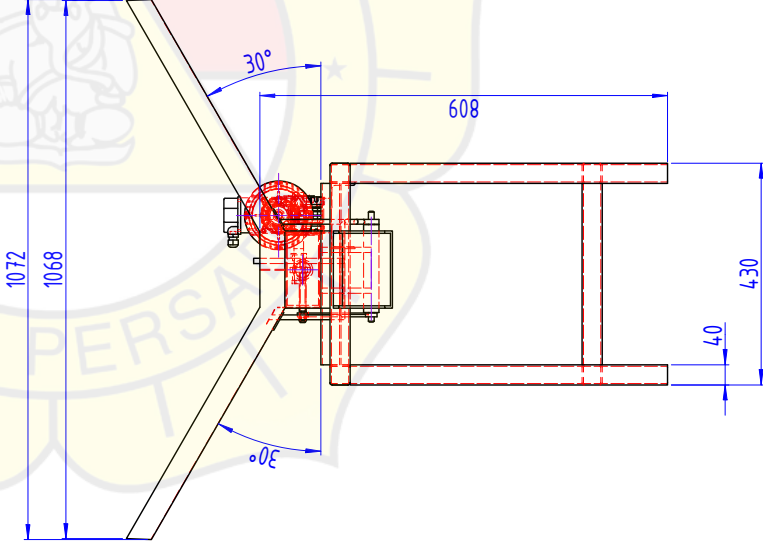
REV	BY.	DATE	DESCRIPTION
0	M. RIFKI S.	02/09/2024	DIKELUARKAN PERTAMA KALI UNTUK MANUFAKTUR



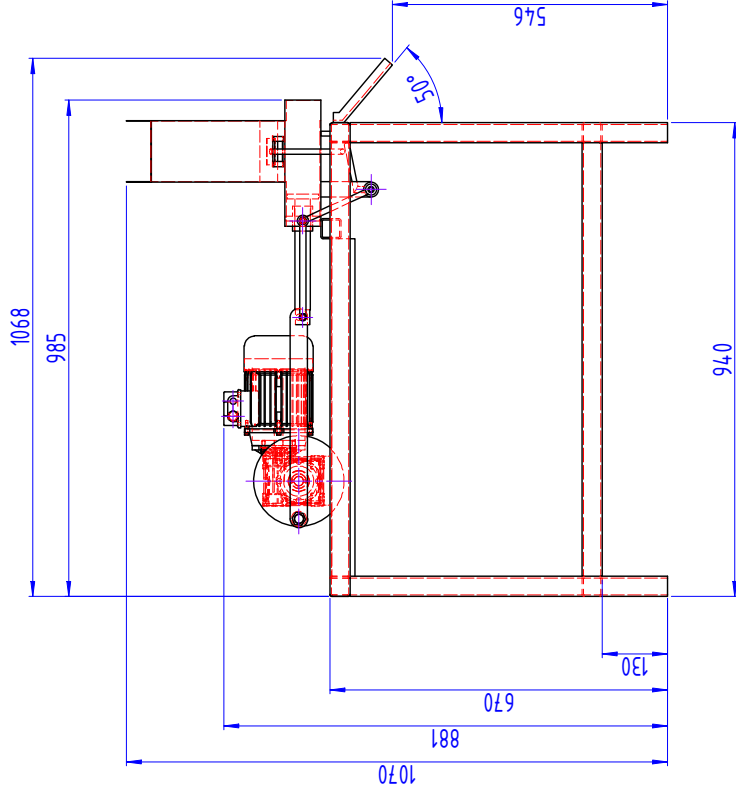
TAMPAK ATAS



TAMPAK ISOMETRIK



TAMPAK KANAN



TAMPAK DEPAN

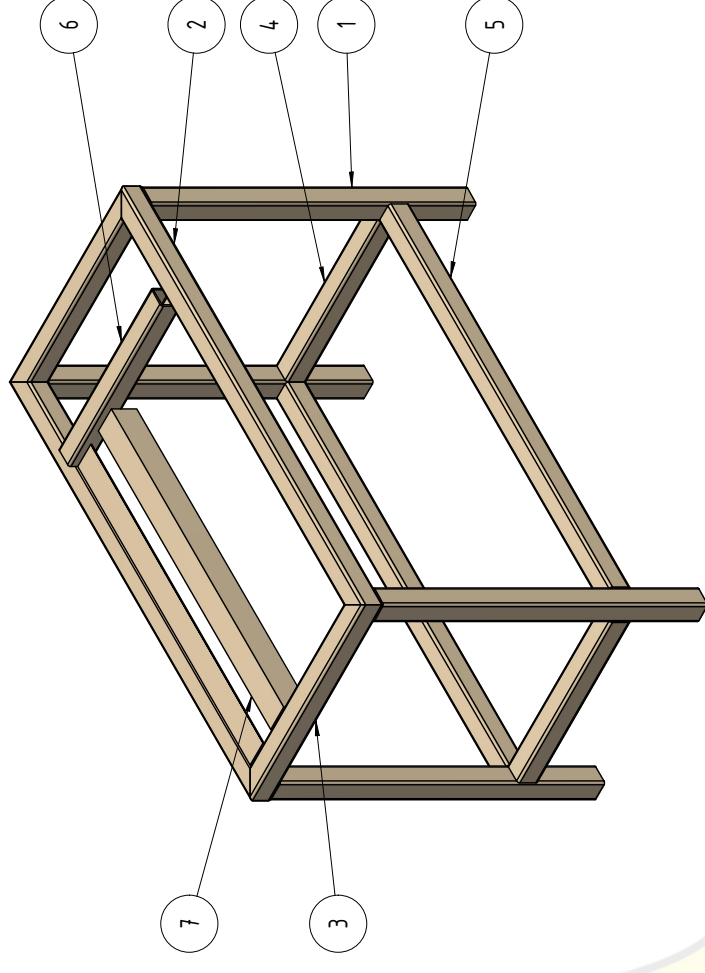
ITEM	QTY	MATERIAL	DESCRIPTION	DIMENSION	DWG NUMBER
18	2	MILD STEEL	HEX NUT M12		
17	1	MILD STEEL	HEX BOLT M10		
16	1	MILD STEEL	GEARMOTOR NMRV040		
15	1	MILD STEEL	BUSHING #2		
14	1	MILD STEEL	BUSHING #1		
13	1	MILD STEEL	MOTOR BASE PLATE		
12	1	MILD STEEL	INLET HOPPER BASE PLATE		
11	1	MILD STEEL	OUTLET CHUTE		
10	1	MILD STEEL	CNN STP CONNECTING		
9	1	MILD STEEL	CNN CTP BOLT		
8	1	MILD STEEL	CNN STP SHAFT		
7	1	MILD STEEL	COVER PENEKAN		
6	1	MILD STEEL	MOTOR SHAFT		
5	1	MILD STEEL	PENEKAN KALENG		
4	1	MILD STEEL	DISC PLATE		
3	1	MILD STEEL	CONNECTING PLATE		
2	1	MILD STEEL	DOUBLE INLET HOPPER		UDP-24-MP-02
1	1	MILD STEEL	RANGKA		UDP-24-MP-01

KEKASARAN DALAM μm		TOLERANSI ISO		MESIN PRESS KALENG.dwg		REVISI : Δ	
	1 : 15	SKALA	DIGAMBAR	M. RIFKI S.	PELANGGAN :		
	dalam mm	UKURAN	DIPERIKSA	HERRY S.	TEKNIK MESIN		
	02/09/2024	TANGGAL	DISETUJUI	HERRY S.	02/09/2024		

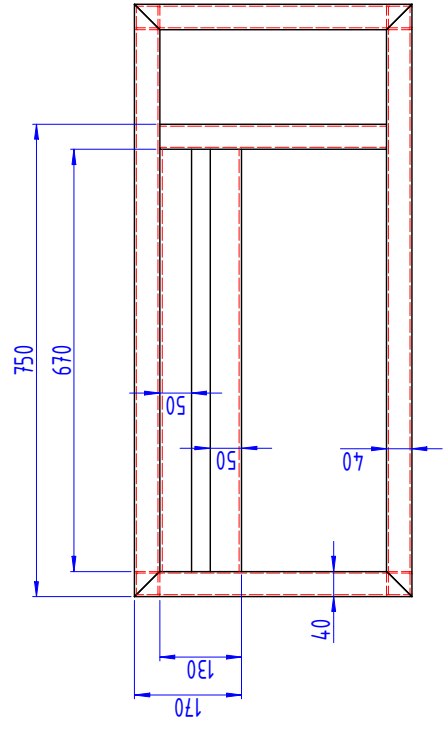
UNIVERSITAS DARMA PERSADA	MESIN PRESS 2 INLET ASSEMBLY DRAWING	UDP-24-MP-00	A3
---------------------------	--------------------------------------	--------------	----

REVISION HISTORY

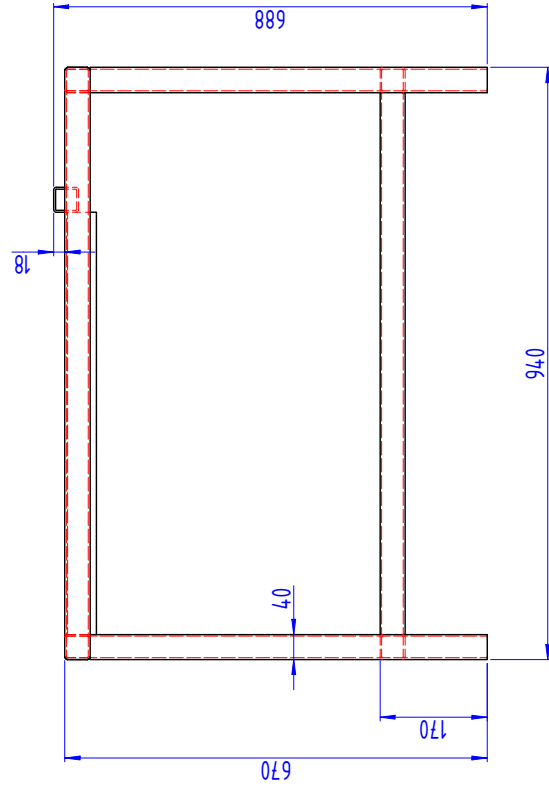
REV	BY.	DATE	DESCRIPTION
0	M. RIFKI S.	02/09/2024	DIKELUARKAN PERTAMA KALI UNTUK MANUFAKTUR



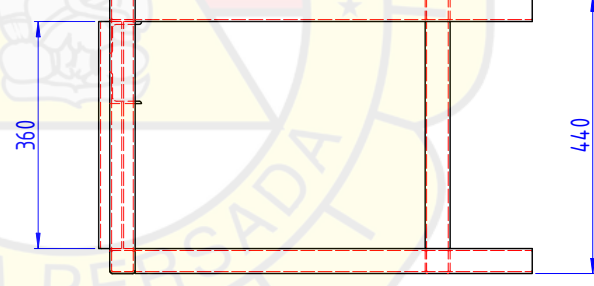
TAMPAK ISOMETRIK



TAMPAK ATAS



TAMPAK DEPAN



TAMPAK KANAN

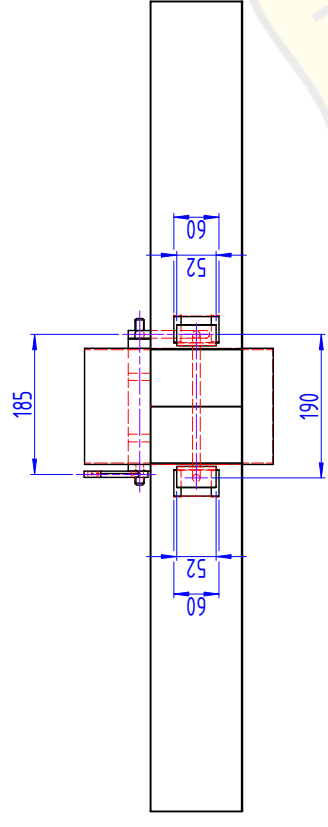
ITEM	QTY	MATERIAL	DESCRIPTION	DIMENSION	DWG NUMBER
7	2	MILD STEEL	RANGKA SIKU	SIKU - 50x50x4 - L.670	
6	1	MILD STEEL	RANGKA HOLLOW #6	HOLLOW - 40x40x3 - L.360	
5	2	MILD STEEL	RANGKA HOLLOW #5	HOLLOW - 40x40x3 - L.860	
4	2	MILD STEEL	RANGKA HOLLOW #4	HOLLOW - 40x40x3 - L.360	
3	2	MILD STEEL	RANGKA HOLLOW #3	HOLLOW - 40x40x3 - L.440	
2	2	MILD STEEL	RANGKA HOLLOW #2	HOLLOW - 40x40x3 - L.940	
1	4	MILD STEEL	RANGKA HOLLOW #1	HOLLOW - 40x40x3 - L.630	

KEKASARAN DALAM μm		TOLERANSI ISO		MESIN PRESS KALENG.dwg		REVISI : 0
	1 : 12	DIGAMBAR	M. RIFKI S.	PELANGGAN :		
	dalam mm	DIPERIKSA	HERRY S.	TEKNIK MESIN		
	02/09/2024	DISETUJUI	HERRY S.	02/09/2024		

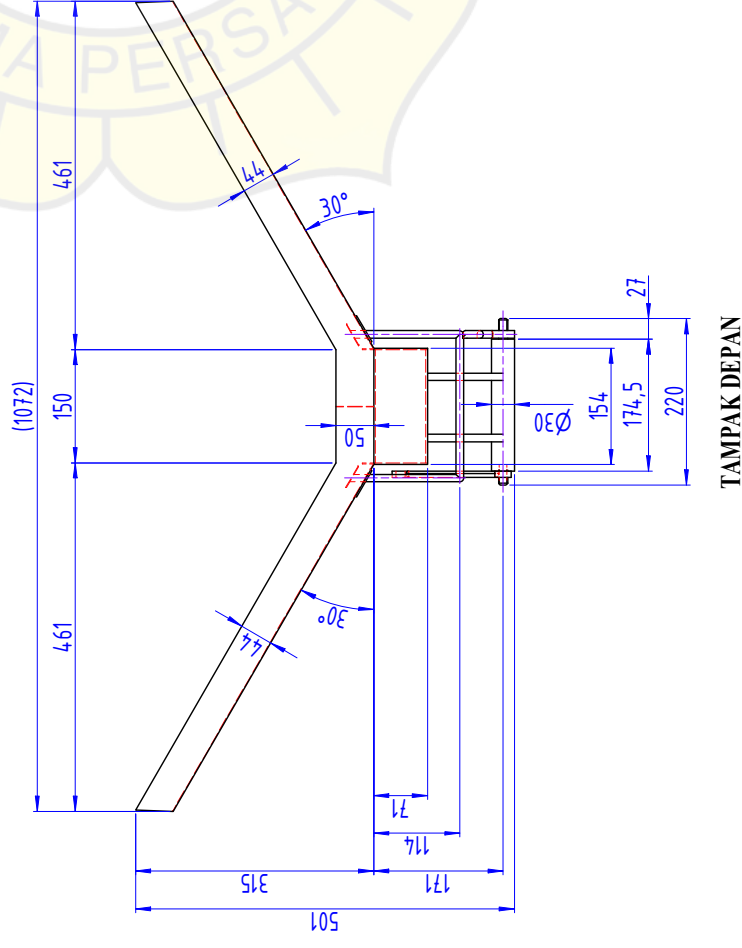
UNIVERSITAS DARMA PERSADA	RANGKA	UDP-24-MP-01	A3
	DETAIL DRAWING		

REVISION HISTORY

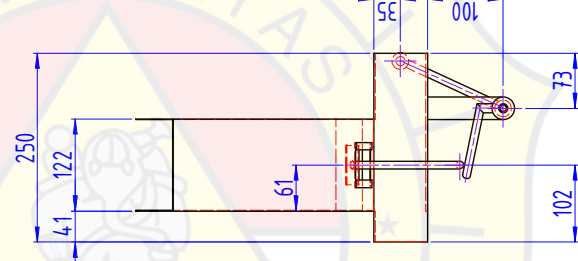
REV	BY.	DATE	DESCRIPTION
0	M. RIFKI S.	02/09/2024	DIKELUARKAN PERTAMA KALI UNTUK MANUFAKTUR



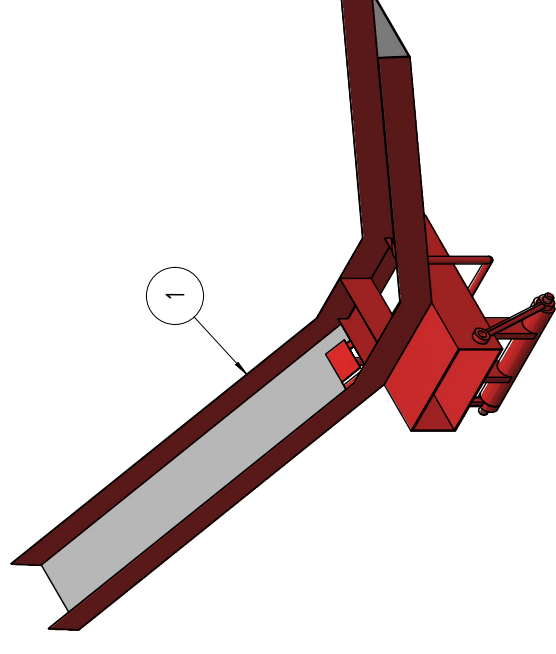
TAMPAK ATAS



TAMPAK DEPAN



TAMPAK KANAN



TAMPAK ISOMETRIK

ITEM	QTY	MILD STEEL	DOUBLE INLET HOPPER	1072x501x250	DIMENSION	DWG NUMBER
KEKASARAN DALAM μm		TOLERANSI ISO		MESIN PRESS KALENG.dwg		
		SKALA	1 : 10	DIGAMBAR	M. RIFKI S.	PELANGGAN : TEKNIK MESIN
		UKURAN	dalam mm	DIPERIKSA	HERRY S.	
		TANGGAL	02/09/2024	DISETUJUI	HERRY S.	
UNIVERSITAS DARMA PERSADA		DOUBLE INLET HOPPER		UDP-24-MP-02		
		DETAIL DRAWING		A3		