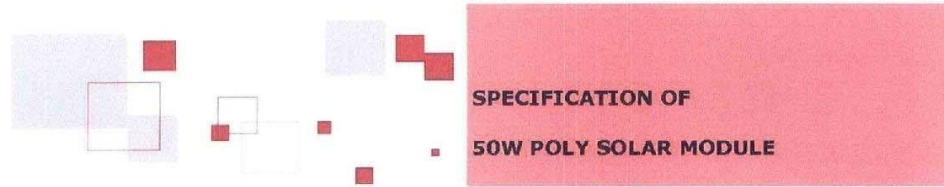


LAMPIRAN I Spesifikasi Panel Surya



Poly-Crystalline

Module type	Pm(W)	Number of cell	Cell Dimension (mm)	Max System Voltage(V)	Vm(V)	Im(A)	Voc(V)	Isc(A)
SY-50P	50W	36	156	1000	17.6	2.84	21.6	3.04

Parameter

Maximum system voltage (V)	1000
Temperature coefficients of Isc (%)	+0.1%/°C
Temperature coefficients of Voc (%)	-0.38%/°C
Temperature coefficients of Pm (%)	-0.47%/°C
Temperature coefficients of Im (%)	+0.1%/°C
Temperature coefficients of Vm (%)	-0.38%/°C
Temperature Range	-40°C ---85°C
Surface Maximum Load Capacity	60m/s (200kg/sq.m)
Junction Box Type	PPO, black
Connectors and Cables Type	500mm
Length of Cables (mm)	300
Cell Efficiency (%)	>14.8%
Output tolerance (%)	± 3%
Glass	High transmissivity low-iron 3.2 mm toughened glass
Frame (Material, Corners, etc.)	Anodized Aluminum Alloy
Standard Test Conditions	AM1.5 100MW/cm² 25°C
Guarantee of power	5 years for whole products, 90% power for 10years, 80% power for 25years.
FF (%)	≥73.3%



Physical Characters

Output	Module Net Weight	Module Size (MM)	Packing	20' Container	40' Container
50W	5.50(kg)	610*670*35	2pcs/carton	1008 pcs	2142 pcs

LAMPIRAN 2 *Accumulator*



VD12-28 12V28AH

VRLA DEEP CYCLE BATTERY

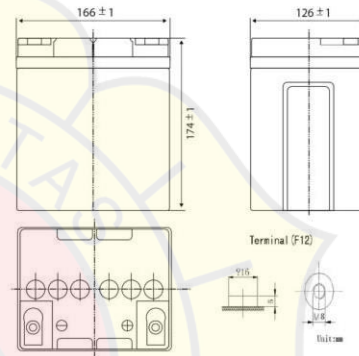
GENERAL FEATURE

- Absorbent Glass Mat (AGM) technology for efficient gas recombination of up to 99% and freedom from electrolyte maintenance or water adding.
- Not restricted for air transport-complies with IATA/ICAO Special Provision A67.
- Can be mounted in any orientation.
- Computer designed lead, calcium tin alloy grid for high power density.
- Long service life, float or cyclic applications.
- Maintenance-free operation.
- Low self discharge.



SPECIFICATION

Nominal voltage	—	12V
Number of cell	—	6
Length(mm/inch)	—	166/6.54
Width(mm/inch)	—	126/4.96
Height(mm/inch)	—	174/6.86
Total Height(mm/inch)	—	174/6.86
Approx.Weight(kg/lbs)	—	7.9/17.41



MATERIAL

Component	Positive plate	Negative plate	Container	Cover	Safety valve	Terminal	Separator	Electrolyte
Raw material	Lead dioxide	Lead	ABS	ABS	Rubber	Copper	Fiberglass	Sulfuric acid

CONFIGURATION

Capacity 77°F(25 °C)	20 hours rate (1.4A 10.5V)	28Ah
	10 hours rate (2.7A 10.5V)	27Ah
	5 hours rate (4.8A 10.5V)	24Ah
	1 hour rate (20.5A 9.6V)	20.5Ah
Internal Resistance	Full charged battery 77 °F(25 °C):8m Ω Ω	
Capacity affected by Temperature (20 hour rate)	104°F(40 °C)	102%
	77°F(25 °C)	100%
	32°F(10 °C)	85%
	5°F(-15 °C)	65%
Self-Discharge 68°F(20 °C)	Capacity after 3 month storage	90%
	Capacity after 6 month storage	80%
	Capacity after 12 month storage	60%
Max discharge current 77 °F(25 °C):300A(5S)		
Charge (Constant Voltage)	Float:13.6 to 13.8V/77 °F(25 °C)	
	Cycle:14.5 to 14.9V/77 °F(25 °C) Max Current:7A	